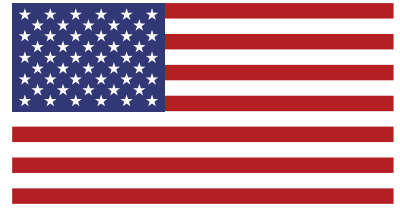


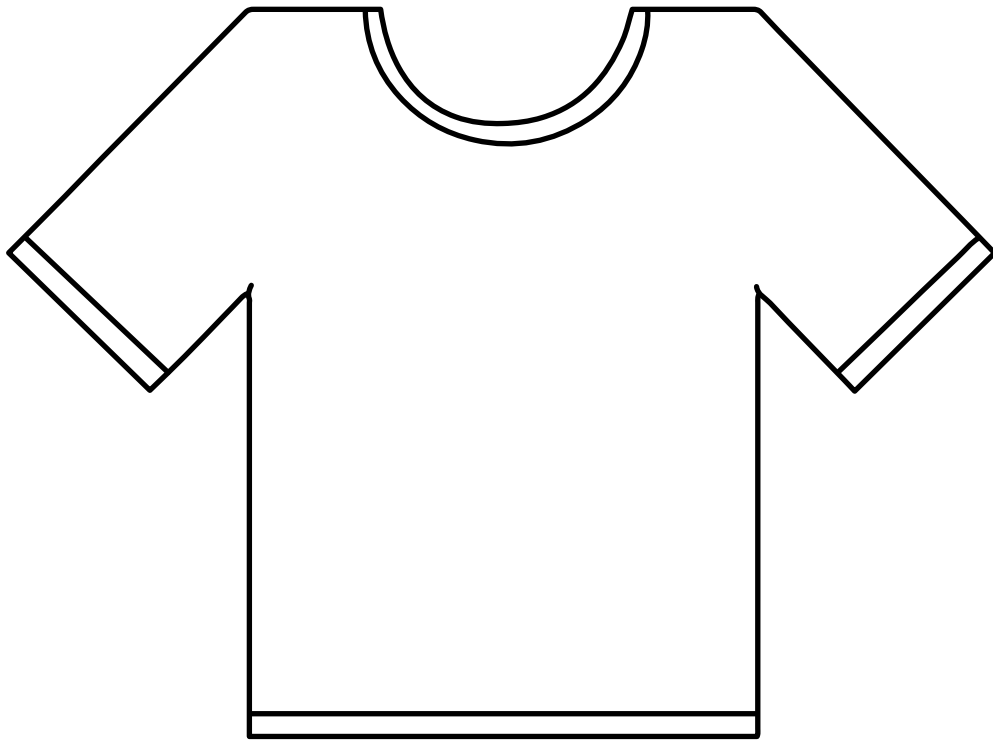
# Symbols: Design a T-Shirt

A **symbol** is a thing that represents something else. We have many state and national symbols. For example, the American flag is a symbol for our nation, and it represents freedom. Rice is a symbol for Arkansas. It's our official grain and shows how important rice is to Arkansas farmers.



Pretend that you are going to design a t-shirt for your group of friends. Consider these questions to help you think about what you can include on the t-shirt: What things do you and your friends like to do? What words would you use to describe your group of friends? Do you all have a favorite color or animal in common?

Think about your answers to the questions above. Now design a t-shirt with symbols that represent you and your friends. Below the picture of the t-shirt, explain what each symbol means.



What do the symbols on your t-shirt represent?

---

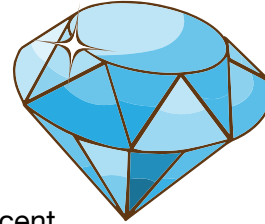
---

---

# Symbols of Arkansas

Arkansas has many state **symbols**, and many of our state symbols are also natural resources. Each of these symbols represents an important part of our state's history or a value that is important to the people who live here. Check out some of them below.

The state gem of Arkansas is the diamond. Do you know why? That's right! You can find diamonds right here in Arkansas. What's really neat is that you can keep whatever you find!



Go outside after a rainfall and take in a deep breath. Do you smell the scent of a pine tree? If there's one nearby, you'll certainly know it. Pine trees cover a huge part of Arkansas! We have billions of them! Not only do we have a lot of pine trees, but they are very important to the timber industry. For that reason, pines were chosen as Arkansas's official state tree.



Arkansas's state flower is the apple blossom. In the spring, apple trees become covered in little pink and white blossoms. How pretty! Arkansas once grew many delicious apples each year. Though we do not grow as many apples in Arkansas today, there are still several apple orchards in the state. Similarly, Arkansas's state grain is rice because Arkansas is a leader in rice production, producing more than 40% of the rice grown in the United States. Rice from Arkansas is eaten around the world!



Each of these symbols is important to our state. If you had to choose another state symbol for Arkansas, what would it be? Draw your choice in the space below. Then write why you would choose that thing to represent our state.

A large empty rectangular box with a black border, intended for drawing a state symbol.

I chose this as a symbol because

---

---

---

---

---

---

---