

# Send along a lunchbox note



1. Cut notes along lines to separate.
2. Add your own message in the box.
3. Place one note in your kid's lunch each day.

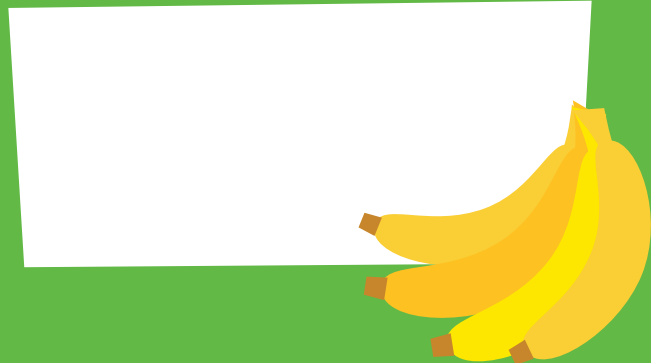


PBS KIDS and the PBS KIDS Logo are registered trademarks of Public Broadcasting Service. Used with permission.

You're the  
**best thing**  
since sliced bread.



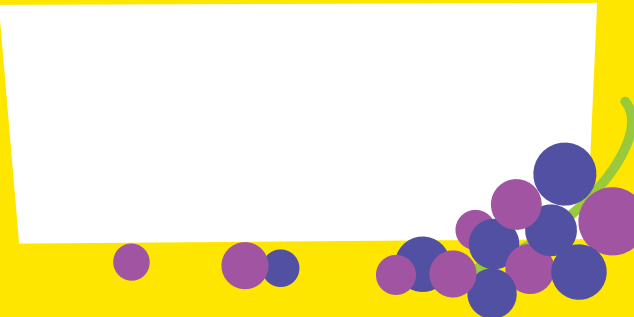
Love you a  
**bunch!**



You're one in a  
**melon!**



**Roses are red.**  
**Violets are blue.**  
Eat your lunch,  
if you know what's  
"grape" for you!



**Happy**



to the **sweetest**  
apple <sup>in</sup> the **bunch!**





Today will  
**bee**  
awesome!



You're kind of a  
**big dill!**



Don't forget,  
I'm **proud**  
of you!



**Shine**  
**Bright** and  
**Be Kind!**

**Q:** What's a  
mathematician's  
favorite dessert?



**A:** Pi.



**Olive you**  
from my head  
**tomatoes!**



**Q:** Why was **6** afraid of **7**?



**A:** Because **789**!

**Q:** What fruit is most even?



**A:** A pear.



**You're wonderful!**



Tell a lunch buddy something kind today!



PBS KIDS and the PBS KIDS Logo are registered trademarks of Public Broadcasting Service. Used with permission.

**You're a super kid!**



Spread your kindness powers today!



**Have a wonderful day today!**

I can't wait to **TACO** 'bout it!



**Have a berry sweet day!**

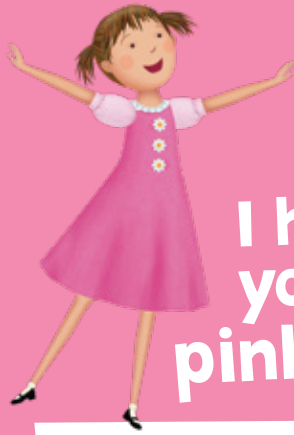


**DANIEL TIGER'S  
NEIGHBORHOOD**

Have a  
**Grr-ific** day!



PBS KIDS and the PBS KIDS Logo are registered trademarks of Public Broadcasting Service. Used with permission. DANIEL TIGER'S NEIGHBORHOOD © 2012 The Fred Rogers Company. All rights reserved.



I hope  
your day is  
**pinkamazing!**



PBS KIDS and the PBS KIDS Logo are registered trademarks of Public Broadcasting Service. Used with permission. Pinkalicious & Peterific® is produced by WGBH Kids and Sixteen South Studios. Funding for PINKALICIOUS & PETERIFIC® is provided by public television viewers. Produced with the participation of Northern Ireland Screen. Corporate funding is provided by Kiddie Academy® and Homer. © 2019 WGBH. Underlying © Victoria Kann, or Victoria Kann and Elizabeth Kann. © Victoria Kann.



Excited to  
**EXPLORE**  
with you!



PBS KIDS and the PBS KIDS Logo are registered trademarks of Public Broadcasting Service. Used with permission. MOLLY OF DENALI™ is produced by WGBH Kids and Atomic Cartoons in association with CBC Kids. Funding for MOLLY OF DENALI™ is provided by Ready To Learn Grant from the U.S. Department of Education; the Corporation for Public Broadcasting, a private corporation funded by the American People; and by public television viewers. Additional funding made possible with the participation of the Province of British Columbia Production Services Tax Credit. Corporate funding provided by Homer and the T. Rowe Price College Savings Plan. Molly of Denali, TM/© 2019 WGBH Educational Foundation. All rights reserved.

Enjoy your lunch,  
Explorer.

**Tally ho!**



PBS KIDS and the PBS KIDS Logo are registered trademarks of Public Broadcasting Service. Used with permission. NATURE CAT and associated characters, trademarks and design elements are owned by Spiffy Entertainment, LLC © 2019 Spiffy Entertainment, LLC. All rights reserved.

I think the  
**WORLD**  
of you!



PBS KIDS and the PBS KIDS Logo are registered trademarks of Public Broadcasting Service. Used with permission. LET'S GO LUNA! © 2019 LATW Productions Inc. All rights reserved.

Activate  
**WILD  
KRATTS**  
Lunch Power!



PBS KIDS and the PBS KIDS Logo are registered trademarks of Public Broadcasting Service. Used with permission. Wild Kratts® © 2019 Kratt Brothers Co. Ltd./ 9 Story Media Group Inc. Wild Kratts®, Creature Power® are owned by Kratt Brothers Company Ltd. Corporate Funding of Wild Kratts is provided by ReadingIQ. All rights reserved.



# Send along a lunchbox note

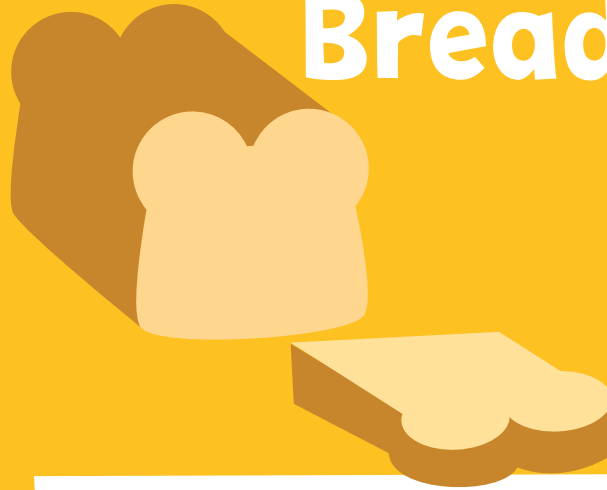
1. Cut notes along lines to separate.
2. Add your own message in the box.
3. Place one note in your kid's lunch each day.

Help your little one learn the names of the foods they eat.



PBS KIDS and the PBS KIDS Logo are registered trademarks of Public Broadcasting Service. Used with permission.

# Bread



Blank white box for writing a message.

# Banana

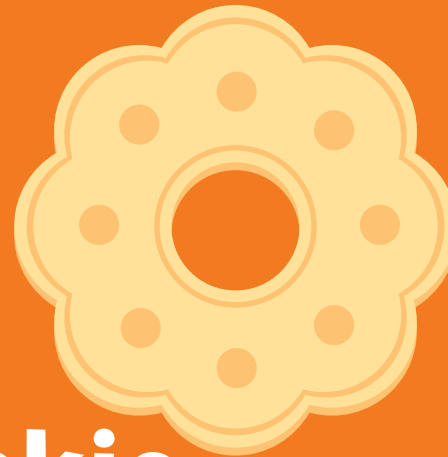


Blank white box for writing a message.

# Carrot



Blank white box for writing a message.



# Cookie

Blank white box for writing a message.

# Milk



Blank white box for writing a message.